

Bovey Tracey Town Guide 2015



www.boveytracey.gov.uk or email info@boveytracey.gov.uk



Jolly Roger is the largest dedicated supplier of quality resin and fibre-glass 3d life-size models in the UK.

Come and see our showrooms
Open Monday – Friday, 9am to 4.30pm
From racing cars to dinosaurs, pirates to Egyptian Sphinx's
we have them all. *You will not believe your eyes.*

Jolly Roger Ltd, The Mill, St Johns Lane, Bovey Tracey, Devon TQ13 9FF

www.lifesize-models.co.uk

01626 833646

Follow us on Facebook or Twitter for our latest news.

Welcome to Bovey Tracey

WELCOME to the 2015 edition of the Bovey Tracey Town Guide and we hope this guide will provide important local information for residents and help visitors to enjoy their visit to the town.

Bovey Tracey is a unique place – a magnet that attracts visitors from around the world throughout the year.

Bovey Tracey nestles on the south-east edge of Dartmoor National Park.

Set amidst beautiful countryside,



the town's history can be traced back to Saxon times, with links to the English Civil War as well as the pottery and railway industries.

In 2010, Bovey Tracey celebrated its 750th anniversary of the signing of its Market and Fair Charter by Henry III in 1260.

Close to Bovey Tracey is Heathfield, which is a substantial residential and significant business area within the parish. Nearby is Bovey Heath, the site of an English Civil War battle. Local legend tells that in 1664 during the civil war, Cromwellian troops reputedly surprised Royalist officers who were drinking and playing cards in a house in East Street thought to be Front House Lodge. On making a hasty exit, one of the Royalists had the idea of grabbing a pile of money from the card table and throwing it out



of the window. The Royalists made their escape, while the poorly paid Parliamentarians scabbled for the coins and fled to Heathfield.

The Battle of Bovey Heath was fought the following day with Cromwell winning 400 horses and capturing seven regimental colours. Today, Bovey Heath is a haven for rare plants and wildlife, which is now owned and managed by Devon Wildlife Trust.

GUIDE CONTENTS

4/5	Things to do and Special Events	33	Bovey Tracey Players
5	Bovey Tracey Information Centre	35	Youth Café
6	Bovey Tracey Town Council	38	Football Club
7	A Message from the Mayor	39	Pétanque Club
6/7	Nourishment Festival	40	Lawn Tennis Club/Bowling Club
9	Contemporary Craft Festival	41	Cricket Club
12/13	Bovey Tracey Heritage Trust	43	Bovey Tracey Primary School
15	Natural England	45	Dartmoor Pony Heritage Trust
17	National Trust – Parke	46/47	Accommodation and Useful Contact Numbers
19	St Catherine's Nursery and Primary School		
21	Horticultural Society		
23	Christians and Churches		
24/25	Bovey Tracey Map		
27	Swimming Pool and Heathfield Community Centre		
29	Activities Trust (BTAT)		
31	Bovey Tracey Carnival		



Devon and Cornwall Newspapers

Produced by Bovey Tracey Town Council. Published by Devon and Cornwall Newspapers Ltd.

Designed by Mid-Devon Advertiser, Old Manor House, 63 Wolborough Street, Newton Abbot TQ12 1NE.

To advertise in the 2016 Bovey Town Guide contact 01626 204767

Printed by Wottons Printers Ltd, Unit 5, Riverside 2, Quay aRoad, Brunel Ind. Est., Newton Abbot TQ12 4DZ.

While every care has been taken in the preparation of this guide, Bovey Tracey Town Council and the publishers cannot be held responsible for the accuracy of the information herein, or any consequence arising from it, or for any errors or omissions.

Bovey Tracey



Plenty to Do

There is plenty to do in and around Bovey Tracey. A walk around the town will reveal many beautiful and intriguing buildings, including the famous medieval Parish Church of SS Peter, Paul & Thomas of Canterbury, Cromwell's Arch and the Old Railway Station, which is now the Heritage Centre.

Visit Bovey Tracey's Information Centre in Station Road car park, where you will find a variety of leaflets, maps and other information on local places to visit and things to do for all the family, including local walks – pick up a free copy of 'Striding Out' which provides details of six walks in the area – and details of local events.

The information centre (01626 832047) also offers details on local accommodation or visit www.boveytracey.gov.uk

Shopping and Eating Out

The shopping facilities in Bovey Tracey mirror the vitality of the town. You will find a wide range of shops and services to meet your every need.

On alternative Saturday's in the centre of the town, Bovey Tracey's Produce Market is held offering a wide variety of locally produced fresh products.

Whether you want a relaxing breakfast, a quick lunch or a special dinner you can find them all in Bovey Tracey. There are superb pubs, hotels, restaurants, cafes and tearooms each with their own particular character offering excellent food and in many cases accommodation.

Also in Bovey Tracey there are craft shops, a weaver and a specialist wool shop.

The Heritage Mosaic Trail

A SET of 12 mosaics mark the Bovey Tracey Heritage Trail, a short walk which highlights a flavour of the town's varied history.

Pick up your free copy from the heritage centre or from the information centre.

Contemporary Craft Festival

This event has been held annually in Mill Marsh Park, Bovey Tracey, since 2004. It now welcomes more than 8,000 visitors and has become one of the most prestigious and highly acclaimed craft events in the UK. The aim of the festival – formed originally by three local craft businesses – was to showcase the very best in British craft and to create a new, sustainable and strong market place for contemporary craft but also to bring greater prosperity to the town of Bovey Tracey. The festival, which presents more than 2,000 stands of the finest contemporary craft with a full programme of educational events, is held in Mill Marsh Park, Bove Tracey every June.

Devon Guild of Craftsmen

THIS year the Devon Guild of Craftsmen celebrates 60 years. From small but ambitious origins, the organisation has grown into a leading educational charity and popular contemporary crafts venue at the hub of local and creative communities.

With a reputation and influence that extends nationally, our exhibitions and events are fun, open to all, inclusive and, we hope, inspiring.

At Riverside Mill we have two galleries, constantly changing displays and showcases in our shop and a lively, friendly cafe with free wifi for your personal use or informal business meetings. See www.crafts.org.uk.

Special Events 2015

In addition to the fortnightly Produce Market, here are some of the main events being held in Bovey Tracey during 2015*.

For further details visit: www.boveytracey.gov.uk.

March 21 to May 10

RE-MAKING THE PAST

Six contemporary makers respond to inspiration from prehistory. Devon Guild of Craftsmen.

Bovey Tracey – the ideal base for exploring

May 2 and 3

SPRING FAIR & MORRIS DANCING FESTIVAL

May 23 to July 5

FREEHAND

Exploring the value of hands-on making and connecting with people through creativity
Devon Guild of Craftsmen.

June 5 to 7

THE CONTEMPORARY CRAFT FESTIVAL

Mill Marsh Park, Bovey Tracey

Long-running crafts festival attracting more than 8,000 visitors into the town.

Set up and supported by Devon Guild of Craftsmen and House of Marbles.

www.craftsatboveytracey.co.uk

July 19

HISTORIC CAR RALLY

Mill Marsh Park, Bovey Tracey.

July 18 to September 6

CELEBRATE – Exhibition of the best new work by Members celebrating 60 years of the Devon Guild of Craftsmen.

July 23

BOVEY TRACEY TOWN CENTRE CYCLE RACE

Start time 8pm.

August 2

BOVEY TRACEY CARNIVAL PROCESSION

Starts at 6pm.

August 3 to 8

BOVEY TRACEY ARTISTS' SOCIETY

SUMMER EXHIBITION

Youth Cafe, Fore Street, Bovey Tracey.

August 15

BOVEY TRACEY FLOWER & VEGETABLE SHOW

Park View, Bovey Tracey.

September 4 and 5

NOURISH FESTIVAL

Throughout the town. Second year for the festival based around food, craft and music, created by the Contemporary Craft Festival, The Cheese Shed and Devon Guild of Craftsmen.

www.nourishfestival.org

September 19 to November 1

MICHAEL HONNOR – PAINTER PRINTMAKER.

Devon Guild of Craftsmen.

November 14 to January 3

MAKE 2015

Contemporary Crafts for Christmas
Devon Guild of Craftsmen.

** Dates and times are subject to change*



Bovey Tracey Information Centre

THE Bovey Tracey Information Centre is located in the car park on Station Road directly opposite the Devon Guild of Craftsmen and is open seven days a week from April to the beginning of November and on most Saturdays for the winter months.

The information centre is staffed by a team of around 30 volunteers whose extensive local knowledge is put to the test by some 12,000 visitors and members of the local community every year.

The information centre provides a single point of contact where visitors and local residents can access a variety of information relevant to Bovey Tracey and the surrounding area, particularly Dartmoor National Park.

If you need to know about local shops and services, places to visit, things to do, where to stay, where to eat, buses, trains, theatres, cinemas, where to walk or cycle, or if you need maps, books or postcards then drop in and see us.

SUMMER OPENING TIMES:

March 30, 2015 to October 31, 2015

9.30am to 3.30pm Saturdays

10am to 4pm Sunday to Friday

WINTER OPENING TIMES:

November 7, 2015 to December 12, 2015

and January 30, 2016 to March 21, 2016

10am to 2pm Saturdays only

**Bovey Tracey Information Centre
Car Park, Station Road, Bovey Tracey
TQ13 7AW**

Phone: 01626 832047

Email: boveytraceyinfo@gmail.com

Website: www.boveytracey.gov.uk



Bovey Tracey Town Council

Established 1974

Town Hall, Town Hall Place, Bovey Tracey, TQ13 9EG

Town Clerk: Mark Wells

Administrative Assistant: Linda Warren

Groundsmen: Ron Hubbard and Roger Rance

Housekeeper: Clare Beresford

For information about the Town Council and the Parish of Bovey Tracey, visit our website: www.boveytracey.gov.uk

Bovey Tracey Town Councillors Contact Details

Town Mayor and Chairman – Eoghan Kelly 01626 830369

Deputy Town Mayor – Ulli Arnold 01626 833376

Bovey Tracey

Tony Allen	01626 836239
Ulli Arnold	01626 833376
Robert Ashby	01626 832388
Dorreen Black	01626 834297
Rob Bray	01626 835591
Martyn Evans	01626 830347
George Gribble	01626 832764
Avril Kerswell	01626 832923
Anna Klinkenberg	01626 834328
Steven Leigh	07792016120
Tina Richardson	01626 835363
Mark Tregonning	01626 835193

Heathfield

David Elphick	01626 832125
Eoghan Kelly	01626 830369

Teignbridge District Councillors – Bovey Tracey

George Gribble	01626 832764
Avril Kerswell	01626 832923
Anna Klinkenberg	01626 834328

Devon County Councillor – Bovey Rural

George Gribble	01626 832764
----------------	--------------

NOURISH FESTIVAL celebrates food, craft and classical music set in various venues in Bovey Tracey. The first Nourish Festival was a huge commercial and critical success and we hope that you can join us this September.

Set in the heart of Bovey Tracey, Nourish is a weekend of events designed to feed the body, mind and senses.

The Nourish food fair will fill Bovey's high street on Saturday, September 6, with some of the region's best producers and delicious street food. The Great Bovey Bake Off and Junior Bovey Bake Off offer opportunities to get the community reaching for their mixing bowls.

A Contemporary Craft Fair will be hosted in the town hall, spilling out on to Fore Street on Saturday, September 5. Curated by Craft festival director Sarah James, The Nourish Craft Fair will showcase top quality makers that can be found in the south west. Other events include craft demonstrations and One Hut Full, a multi-sensory experience presented in a beautifully made shepherds hut. One Hut Full immerses visitors in the work of hill farming on Dartmoor. Other events will



Telephone:
01626 834217

Email:
info@boveytracey.gov.uk



Mayor's Message

I HOPE you enjoy reading the 2015 town guide, which promotes a wide range of services, facilities and activities that we are privileged to have located in and around our town.

The council and I are very interested in listening to new ideas and innovations on how we can maintain and continuously develop the area for a growing population. I am particularly proud of all the willing volunteers hidden away in so many different groups and associations, beavering away to provide the social fabric of our great town.

Last year saw the construction of the skate park at Mill Marsh Park for the youth of Bovey Tracey. The town council were successful with their application for, and have been selected as, one of Devon Libraries Community Pilot projects. Furthermore, work was undertaken to complete additional sections of the Wray Valley Trail and the town council recognised the importance of the public conveniences at the Recreation

Ground and took action to secure the future of this vital facility. I'm looking forward to seeing more exciting developments come to fruition during the remainder of my year in office, which will include a new and improved website to enhance our delivery of information and to better serve our community.

Bovey Tracey Town Council continues with its plans for the regeneration of Station Road car park and the development of the community building; this area is a strategic and focal point for everyone coming into Bovey Tracey so needs to be of the highest possible standard as it will be there for many years to come.

So whether you are a resident or visitor to Bovey Tracey, I hope this guide will help and inform your stay. May I wish you an enjoyable summer of activities and events and I very much



take place at The Devon Guild of Craftsmen.

The music programme curated by Ian Wellens, will see the internationally renowned Brodsky Quartet returning as headliners on Saturday, September 5.

New acts this year include The Gould Piano Trio. Established for 20 years, the Gould trio is probably the UK's leading piano trio.

Having met at the Royal College of Music in 2006, Sirocco Saxophone Quartet is a young and dynamic group of saxophonists from the UK and Germany. Joining the programme is Fontanella, comprised of some of the UK's leading specialist recorder players. They have appeared in concert and on radio and TV across Britain and Europe. Learn Devon will also deliver a range of music workshops for adults in the Methodist Hall.

Nourish Festival is a community initiative-led by The Contemporary Craft Festival, The Devon Guild of Craftsmen and the award-winning Cheese Shed.

The Food & Craft Fair are free, concerts will be ticketed and full details and ticket information can be found via www.nourishfestival.org.



Every day from 10am
Great Lunches, Cream Teas,
Cakes & more ...

Evening Field Kitchen
(Booking Essential)

Summer BBQ's & Music

Private Parties

Great Selection of
Wines & Beers



01626 830016

www.homefarmcafe.co.uk



The Contemporary Craft Festival

IT'S been a particularly exciting year for the Contemporary Craft Festival. Having picked up a whole host of awards for Tourism Event of the Year, this year has a lot to live up to.

Always looking to improve and impress the loyal and discerning festival audience, the event has more activities than ever before.

More than 200 of the UK's finest makes will be exhibiting and the 2015 programme is brimming with workshops, demonstrations, exhibitions, craft curiosities, children's activities and entertainment, street theatre, festival food and live music.

New features include the Textile Tipi held in association with Plymouth College of Art, with hands-on craft activities.

Fact meets fiction in a wooden Curiovan – a mobile gallery and museum showcasing the natural world and art inspired by it.

One Hut Full is a multi-sensory experience presented in a beautifully made shepherds hut. One Hut Full immerses visitors in the work of hill farming on Dartmoor.

Barrel Top Wagons has teamed up with Design Nation to present leading designer makers in a wooden towing vehicle, handmade in Devon. It's what dreams are made of.

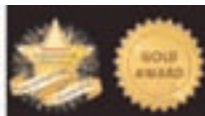
Tickets: adult day ticket £8, concessions £7, Accompanied children under 14 free, three-day weekend tickets £15/£13 concession.

For full details and how to book tickets and workshop, go to www.craftsatboveytracey.co.uk

June 5-7, 2015



The Contemporary Craft Festival 5-7 JUNE 2015
Tourism event of the year
MILL MARSH PARK, BOVEY TRACEY, DEVON



The Contemporary Craft Festival

5 - 7 JUNE 2015

Mill Marsh Park, Bovey Tracey, Devon
TOURISM EVENT OF THE YEAR
www.craftsatboveytracey.co.uk

Tracey Falvey



Meet Over 200 makers
Workshops
Make & Take
Demonstrations
Craft Supplies
Festival Food
Live Music
Craft Curiosities
Street Entertainers
Exhibitions
Children's Crafts

nourish

FESTIVAL

craft • food • music

BOVEY TRACEY • Sept 4-5 2015



Based in the heart of Bovey Tracey, Nourish presents the best of regional food and contemporary craft, together with stunning classical performances. Including Nourish Food Fair on Fore Street, Nourish Craft Fair in the Town Hall and The Great Bovey Bake Off.
www.nourishfestival.org

PACKFIRST REMOVALS

MOVERS / PACKERS / STORERS / SHIPPERS

Budget Removals Service

- Packfirst now offer a **BUDGET** option alongside our renowned premiere removal, packing and storage services.
- We have a range of options and prices to enable you to plan your own budget removal using our fully trained, polite and caring staff.
- We offer a range of different vehicle sizes from Jumbo Transit with driver for only £25 per hour to a full removal truck with driver for only £50ph or also with an additional porter for only £12 per hour.
- A female packing service is also available consisting of 2 female packing assistants for £30 per hour plus packaging.

Call us for more details or to book today!

01626 833 400

www.devonremovals.co.uk

Jumbo Transit



3.5 Ton Luton



Removal Truck



The Edgemoor
So much moor

Relax with Sunday Lunch 12.00 last order 2.00

Dine by Candle Light in our Restaurant 6.30 last order 8.45

Enjoy Devon Cream Tea in our Beautiful Garden

Indulge with Buttered Crumpets in front of the open log fire

HAYTOR ROAD, LOWERDOWN CROSS, BOVEY TRACEY, TQ139LE
www.edgemoor.co.uk

01626832466

Weddings

Conferences

Clubs & Societies

Murder Mystery Dinners

Bovey Tracey Heritage



Bovey Tracey
Heritage Centre,
The Old Station,
St John's Lane,
Bovey Tracey
TQ13 9GP

**FREE ENTRY and
FREE PARKING**

**Open from early
April to end of
October.**

OPENING TIMES
Monday to Friday
10am to 4pm
Saturday 10am
to noon



'The small museum with a big heart'

YOU will receive a warm welcome to this restored railway station which is a mine of information about all aspects of the history of Bovey Tracey.

With artefacts and displays about the town's contribution to world war, the pottery industry, the granite tramway, local mining, agriculture and railways, there is something to

interest everyone.

Senior visitors will be able to rekindle memories of past times and children will find their own activity area to help them enjoy the museum.

The remains of an internationally significant 18th century pottery kiln and a restored GWR brake van can also be found on site.



Centre



Cards, books and small souvenirs for sale.
All proceeds go towards heritage centre
running costs.

Registered Charity: 1063070

The Heritage Trust programme of events
and contact details can be found at:
www.devonmuseums.net/bovey

TO mark the centenary of the first world war, a
specially made poppy will be added to our
display on the anniversary of the death of each
man honoured on the town's war memorial.



Telephone: 01626 835078
e-mail: bovey@devonmuseums.net

Bovey Tracey Heritage Trail



*'Follow the mosaic trail around Bovey Tracey
and discover the history of our town.
Pick up your free copy from the information
centre in the car park, Station Road'*

CAR REPAIRS



SERVICING



AIR CON.



DIAGNOSTICS



+ FREE LOCAL COLLECTION



01626 836236

BLUE WATERS INDUSTRIAL ESTATE
POTTERY ROAD, BOVEY TRACEY, TQ13 9DS

Moorland auto services



MILL MARSH PARK • BOVEY TRACEY



Bovey Tracey Carnival

FREE ADMISSION



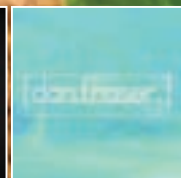
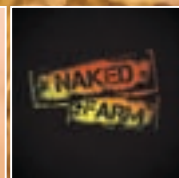
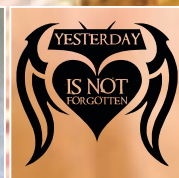
PICNIC
in the
Park

Join us on...

Saturday
25th July
5pm - 11pm



LIVE BANDS PERFORMING



HOG ROAST BY MICHEAL HOWARD BUTCHERS
BEER TENT BY  & FUNLANDS FUNFAIR

SUNDAY FUNDAY



STALLS • CAR BOOT SALE
LIVE MUSIC • FALCONRY • PONY RIDES
HUMAN GYROSCOPE • FUNLANDS FUNFAIR • DOG SHOW
SPECIAL GUEST APPEARANCE & MUCH MORE!

CAR BOOT SELLERS FROM 11.30AM - CARS £5 VANS £10
DOG SHOW RUN BY: DARTMOOR VIEW DOG RESCUE

Sunday 26th July @ 12:30pm - 4:30pm





Enjoy the natural environment

NATURAL
ENGLAND

If you go down to the woods today... do not be surprised!

A LOT of people think woods stay the same or should stay the same and their favourite place should not be touched by man.

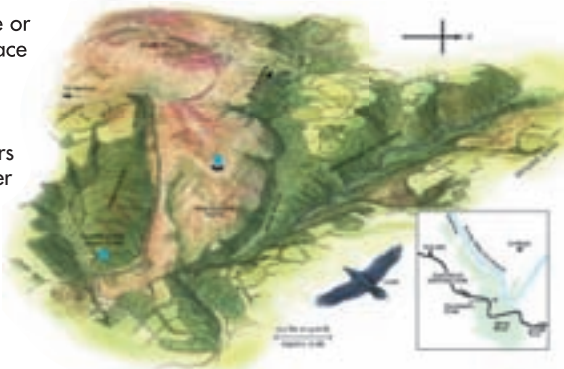
All woods have been affected by man. In Devon, woods have been coppiced for charcoal or the tanning industry while others have been felled in the past to create conifer woodlands.

Woods change. Dense holly thickets grow up shading out the oak woodland cutting out light to the wayside trees one sees along footpaths. These not only shade out the other trees but also lichens which are special. Cutting holly alongside tracks and footpaths helps species like butterflies. Not all holly is cut. The idea is to enhance the linear light route and glades where there are special features.



Woods also grow. Areas where once small bushes or isolated trees can become filled with trees converting what were once open habitats into a wooded landscape. Where there are conifer plantations these are thinned or felled to favour more mixed woodlands harbouring more of our native trees.

Woods also get older, but as the trees get older they create dead wood habitats and places for



special invertebrates and bats. Some of the oldest trees in Bovey Valley are old pollards (a tree that used to be cut above deer height to provide woody winter forage). These pollards have been left for 200 years and there is a danger that they will fall apart, so work is being carried out to slowly reduce the weight off some of these trees and clear round them so they can survive into the future.

The Woodland Trust, Natural England and the Moor than Meets the Eye team will be running some events throughout the year to explain what benefits all this work has on the wildlife.

For more details go to
<https://moorthanmeetstheeye.wordpress.com/>

Images: Simon Williams – www.southviewimages.co.uk.



ARG

GARAGE SERVICES

MOT TESTING STATION

Class 4 and Class 7 motors including campervans

FULL WORKSHOP REPAIR FACILITIES

to all makes of vehicles.

SERVICING

Main Dealer recognised **BODYSHOP**

TYRE SUPPLY & FITTING SERVICE

FOUR WHEEL ALIGNMENT

AUTOLOGIC DIAGNOSTIC SPECIALIST

for Seat, Skoda, Volkswagen, Audi, BMW, Mercedes - Benz, Land Rover, Range Rover and Jaguar.

Pottery Road, Bovey Tracey, Devon



Tel 01626 833222

Mobile 07836 353976



I 
walking

Parke

Enjoy walks through beautiful parkland, woodland and by the river. Pop in to Home Farm Café for a bite to eat, open all year.

01626 834748
nationaltrust.org.uk/parke

National Trust

PINK'S PLACE

TEA ROOMS & ANTIQUES

Bed and Breakfast



Sunday Lunch – 3 Courses £8.95

Every Monday Senior Citizens - 2 Courses **£4.50**
(normal price £5.50)

Open 6 days – 9am-4pm - closed Wednesday
Parties Catered for

www.courtenayhouse.co.uk

Fore Street, Bovey Tracey

Tel: 01626 835363

Courtenay House



Gentle and effective treatment for a wide variety of spinal and joint conditions

Conveniently located just off Bovey Tracey high street



Contact the clinic to book your half price consultation

Call **01626 835447** or visit
www.boveytraceychiropractic.co.uk
Joseph Arkle BSc MChiro



Parke Bovey Tracey

PARKE sits on the outskirts of Bovey Tracey and is a five minute walk from the centre of the town. There are lots of circular walks of different lengths from a gentle stroll along by the river to a more challenging walk through the woodland.

A walks leaflet is available from the National Trust office opposite Home Farm café. The café serves home cooked dishes, teas, coffees, cakes and ices and is open all year. Check opening times at www.homefarmcafe.co.uk or ring 01626 830016.

Parke has a fascinating history and clues to its history can be found all over the place.

Major Hole left Parke to the National Trust in 1974. The house you see above, constructed around 1826, was built on the site of a Tudor house, remains of which can be seen in the gardens. The house is currently leased to Dartmoor National Park Authority and not open to the general public. The two rows of granite posts in the parkland, were rails from the

nearby tramway used to take granite from Haytor quarry to Stover Canal at Teigngrace. One of the old trucks used can be seen in the open shed behind the house opposite the lavatories.

The weir on the river dates back to

medieval times and feeds the leat, which was built to run a water-powered mill in Bovey Tracey.

There is an abundance of wildlife at Parke. In the meadows look out for orchids and ragged robin. Along the River Bovey you may see kingfishers and dippers – it is home to salmon and sea trout too. Keep an eye out for otter

spraints (dung – you will smell it first!).

In the woodlands, you may see badgers, foxes, roe deer, great spotted and green woodpeckers. Bats emerge at dusk from around the buildings.

Parke continues to be a managed working landscape to support a number of wildlife habitats, a place for people to enjoy and to produce food. The walled garden dates back to the 1800's, when it would have provided soft fruit for Parke House. The ground slopes giving the walls an unusual shape. After many years of neglect it is now jointly run by the National Trust and Bovey Climate Action to produce locally-grown fruit and vegetables, including, apricots, figs, apples, pears, root vegetables, salad leaves and cut flowers.

The orchard contains 150 cider apple trees. Parke holds an annual apple day early in October where apples are picked and made into apple juice and cider using an apple press.

The dismantled railway line is used today as part of the Wray cycle trail.

The Dartmoor Pony Heritage Trust (DPHT) is a registered charity established in 2005 to protect and conserve the Dartmoor Pony on Dartmoor and is based at Parke.

For further details and opening times visit the DPHT website www.dpht.co.uk or check the board in the car park.

For further information and events go to www.nationaltrust.org.uk/parke or ring Dartmoor Countryside Office 01626 834748.



The
The Cromwell
Arms

Great British Pub Award
Regional Winners/Finalists 2014



- Traditional Country Inn
- 14 ensuite Bedrooms
- Good quality food, ale and atmosphere
- Food Served every lunchtime and evening
- Car Park and Garden
- Corporate Meetings and Family Gatherings catered for

Fore Street, Bovey Tracey, TQ13 9AE
Tel:- 01626 833473
www.thecromwellarms.co.uk



Clive Parker BSc (Hons), MC Optom, FBD
OPTICIANS

- Full NHS/Private Eye Examinations for Adults and Children
- Wide Choice of Frames & Sunglasses from Budget to Designer for all ages
- Comprehensive Contact Lens Fitting & Aftercare
- Glaucoma & Diabetic Screening
- Full Repair Service
- Collection point for any unwanted spectacles for Vision Aid Overseas
- Hearing Service Available

CALL IN OR TELEPHONE FOR PROFESSIONAL AND
FRIENDLY HELP AND ADVICE

Tel: 01626 832947
Emlyn House, Fore Street, Bovey Tracey TQ13 9AD

ST ANDREWS HOUSE

Residential Care Home

*Traditional values
for Tomorrow's world*

01364
653053



Nourishment
Value, Vitality
Cleanliness
Security
Privacy
Comfort
Companionship
Warmth
Entertainment

West Street, Ashburton, Devon. TQ13 7DT
www.standrewsdevon.co.uk

Dream, Believe, Achieve

ST CATHERINE'S has been caring for and educating the children of Heathfield for more than 100 years. Our school motto is 'Dream Believe Achieve', a philosophy that underpins all that we do.

St Catherine's is part of the highly successful United Schools Federation (USF) which includes St Michael's in Kingsteignton, St Mary's in Brixton (near Plymouth) and Marlton Primary, (near Paignton). The continued growth and development of the federation clearly reflects the progress that the schools are making by working in partnership together. This progress gives all children access to a wide range of opportunities and experiences that enhances their learning and ensures that the children are progressing and attaining levels that exceed expectation. Everyone involved with the school works tirelessly for the continued improvement of the school.

St Catherine's was inspected in November 2011 by Ofsted, being judged as 'good' with many 'outstanding features'. In December 2011 the school was also inspected by SIAS (Statutory Inspection Of Anglican Schools), and was judged as being a 'good' school, confirming the high quality of our provision through our positive Christian ethos that underpins everything that we do.



A 'good school with outstanding features' – Ofsted 2011
A 'good church school' – SIAS 2011

In December 2012 the school was also honoured by the Department for Education as being one of the top 100 schools nationally for sustained improvement in Key Stage 2 results at level 4 and above in the previous three years.

In September 2014, St Catherine's was recognised for being in the top two per cent of all

schools nationally for its achievement in Key Stage 1 phonics.

We are very proud of this achievement.

St Catherine's is a school that has continued to improve in all areas. We have an exciting international curriculum that develops children to become citizens of the world. We have an exciting range of extra curricular activities including caving, mountain biking, scuba diving, climbing, engineering, various sports clubs, art and craft clubs, a choir and even a radio club which helps to produce our own radio programmes for 'Radio USF'. We have also extended our provision by starting an 'Early Birds' club to give parents the opportunity to bring their children to school early.

We would welcome anyone who would like to find out more about us and what we can offer you and your children. Please feel free to contact the school and we will be more than happy to show you what we are all about.



HOUSE of MARBLES

and TEIGN VALLEY GLASS

Shops • Restaurant • Games Garden
Glassworks • Marble Runs • Museums



Working Glass & Games Factory

Historic Pottery Site • **Free Admission and Free Parking**

POTTERY ROAD • BOVEY TRACEY • TQ13 9DS • 01626 835285

www.houseofmarbles.com

Bovey Tracey Horticultural Society

THE Bovey Tracey Horticultural Society held its first summer show in 1863, and continued up until the mid 1930s.

In the 1960s, the Bovey Tracey Produce Association took over the running of the British Legion's Annual Flower Show, and reinstated the name of the Bovey Tracey Horticultural Society.

The majority of its 150 or so members live in the Bovey area, but it also has members in Stokeinteignhead and Newton Abbot.

During the winter/spring months – November to April –

the society has a talk on an item of horticultural interest on the second Tuesday of the month, commencing at 7.30pm in the Methodist Church Hall, Le Molay Littry Way, Bovey Tracey.

Excursions are organised during the year, to horticultural venues both local and distant, including a theatre trip to London and a Christmas outing in December.

The society holds two shows every year, a members' exhibit only Spring Show in April at the Methodist

Hall and the main event, the annual Summer Show, in Parke View Meadow, opposite the Methodist Church, on Saturday, August 15.

The annual meeting is held on the second Tuesday in October, again at 7.30pm in the Methodist Hall. This is followed by a social evening.

Membership subscription is £7.50 per year. This gives free entry to the winter meetings and a quarterly newsletter.

For further details, contact Jill Hosford 01626 832966.



Farm Shop and Barn Cafe

Local farm shop offering friendly service,
sensible prices and free parking



Local, Local, Local

- * Potatoes, veg and eggs
- * Beef joints, steak and mince
- * Pork, bacon and ham
- * Bread and cheeses
- * Milk, cream and yoghurt

From our own kitchen

- * Cakes, Pasties and sausage rolls
- * Pies and ready made meals
- * Award winning marmalades, jams and chutney



A warm welcome awaits you in our Barn Cafe

Enjoy a hearty breakfast, lunch or afternoon tea
and don't forget to book for your Sunday Roast

We are open:

Tue - Sat 9.30 - 5.00
Sun 10.00 - 4.30

NOT OPEN ON MONDAYS

Haytor Rd, Bovey Tracey, Newton Abbot,
Devon TQ13 9LL tel 01364 661341

www.ullacombefarm.co.uk

Lots of free parking and easy access for disabled vehicles
Come and see for yourselves



Christians and Churches in Bovey Tracey

Dear Friends

The Church is very much alive, well and active in your community! In fact, although we share a common faith, we have a variety of different kinds of church, and in them all you will find welcome, friendship and support. So whether you prefer the beauty of ancient church buildings or the simplicity of a school hall, singing accompanied by an organ or by guitars and drums, the dignity of traditional liturgies or the informality of the spontaneous, there is something for you!

As Churches, we all work together closely (and are a part of a wider grouping along the valley all the way up to Moretonhampstead) which enables us to run activities such as our annual summer Holiday Club (pictured) for primary school aged children, and to employ a youth outreach worker, Pippa. The Holiday Club, at the start of the school summer break, is always fully subscribed, so please look out for the publicity and book in as soon as you can!



We are grateful that the churches are all now fully staffed, with the recent arrival of Fr Guy de Gaynesford at the Catholic Church of the Holy Spirit, and over the coming months, as a part of their proposed Church reordering, the Parish Church of St Peter, St Paul and St Thomas is planning to undertake a community survey of local needs and aspirations – you are all welcome to have your say!

Between the churches we offer a range of regular groups and activities for all ages, from babes and toddlers through to fellowship and care for the elderly – too many to list here, but something for everyone – and, as individuals as well as churches, we try to be active within Heathfield and Bovey Tracey, living out our faith in daily life and playing our part in the wellbeing of our community.

So it doesn't matter whether you are new to our area or have been here for ages, whether you've had any contact with or experience of church

The Parish Church of SS Peter, Paul & Thomas of Canterbury

East Street, Bovey Tracey

Vicar: Rev Graham Hamilton 01626 834835

www.pptbovey.org.uk

Bovey Tracey Baptist Church

Hind Street, Bovey Tracey

Minister Rev Mark Styants 01626 835264

www.edbc.co.uk

The Roman Catholic Church of the Holy Spirit

Ashburton Road, Bovey Tracey

01626 833432

Bovey Tracey Methodist Church

Fore Street, Bovey Tracey

Minister: Rev Kevin Hooke 01392 211952

The Church of St John the Evangelist

Newton Road, Bovey Tracey

Parish Priest: Fr Greg Stanton 07925051905

Heathfield Community Church

St Catherine's Church of England Primary School

Musket Road, Heathfield

Phil Frost 01626 854108

Terry Higgins 01626 834589

Rora Christian Fellowship

Rora House, Halford, Liverton

Malcolm Ford 01626 821746

Youth Pastor: Robin Smith 07905148955

email: robin.a.smith87@hotmail.com

Youth Outreach Worker: Pippa Shemwell

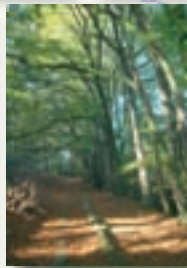
07532 445769

before, or whether you have a firm faith, are searching for some meaning or are simply curious – we are very welcome to explore the churches and to find out more. Just ask at any of the churches about what's going on across them all, or look out for publicity of particular events and activities.

Rev Kevin Hooke, Methodist Minister and Chaplain to the Town Council



Bovey Tracey



map



Prestige & 4x4 Car Sales

www.ashtons.uk.com 01626 832000
 Blue Waters Industrial Estate | Pottery Road | Bovey Tracey

complete 
INDEPENDENT ESTATE AGENCY

Sales | Lettings | Land | New Homes

Your complete
property service
for Teignbridge
& Dartmoor



Book a FREE valuation today **01626 36 36 36** or visit **www.completed.co.uk**

79 Queen Street | Newton Abbot TQ12 2AU | newtonabbot@completed.co.uk | Emlyn House | Fore St | Bovey Tracey TQ13 9AD | boveytracey@completed.co.uk

REMEMBER – THE WATER IS WARM WHATEVER
THE WEATHER

Bovey Tracey Swimming Pool

THE Bovey Tracey Swimming Pool is a heated open air pool with sun terrace and spectator area, disabled facilities and toddler pool.

The pool is open from April 18 to September 13, 2015, and full opening times can be found on our website. Evening activities include lane swimming, children's swimming clubs, lifesaving clubs, Happy Hour (all swims £1), ladies' night and adult conditioning sessions. We also run early morning swim sessions on Mondays, Wednesdays and Fridays.

One-to-one swimming lessons are available with qualified swimming teachers. Family discounts apply on weekend afternoons



between 4pm and 6pm.

The pool is run by the Bovey Tracey Swimming Pool Association, registered charity number 300773, with the help of more than 80 local volunteers.

For more information go to www.boveyswimmingpool.org.uk, or e-mail us on boveypool@gmail.com or phone us on 01626 832828 during opening times.

Heathfield Community Centre

WELCOME to our Community Centre!

We host a wide variety of activities and events.

Let's kick off with Kick boxing on Monday & Friday evenings and Sunday afternoons.

Dance the days and nights away with M-Dance on Tuesdays, Wednesdays and Fridays.



Bring your toddlers along for a coffee and chat on a Thursday morning and your older kids to the Scouts on a Thursday evening. We also host a Christian Group meeting on a Thursday evening.

You can finish the working week with a spot of pilates on a Friday morning.

And don't forget our Bingo nights, every other Tuesday and our coffee mornings, every other

Wednesday (see posters for dates).

Our hall is ideal for children's birthday parties (big enough for a bouncy castle!) and our upstairs lounge area (lift available) is comfortable for business meetings, training sessions and family gatherings.

There are kitchens on both floors where you are welcome to make light refreshments.

The centre has full disabled access and includes disabled facilities.

We have on-site parking for about 20 vehicles.

Heathfield Community Centre
10 Cannon Road, Heathfield, TQ12 6SH
Phone: 01626 834420

Email:
heathfieldcommunitycentre@btconnect.com
Office opens 9am-noon Mondays
Phone messages and emails picked up remotely at other times.

Devon Guild of Craftsmen

The largest contemporary craft centre in the South West celebrates 60 years with an exciting programme of exhibitions and events at Riverside Mill, Bovey Tracey, Devon



Images: Michael Honnor (top left), Amy Cooper (MAKE 2015) (bottom left), Mike Tingle (right)

FREE all-weather attraction open 7 days a week 10am - 5.30pm throughout the year
2 exhibition galleries extensive shop **acclaimed café** **riverside setting**
See www.crafts.org.uk or call 01626 832223 for your free events brochure

The Devon Guild of Craftsmen, Riverside Mill, Bovey Tracey, Devon TQ13 9AF
Free Admission • 01626 832223 • www.crafts.org.uk

Follow us on



Supported using public funding by
**ARTS COUNCIL
ENGLAND**

BOVEY TRACEY Activities Trust

BOVEY Tracey Activities Trust (BTAT) is a charitable trust run entirely by volunteers. Membership is open to those aged 55+ living within a five-mile radius of the centre of Bovey Tracey.

Its aim is to encourage those approaching retirement or already retired to continue to enjoy a physically and mentally active lifestyle by participating in a wide variety of indoor and outdoor educational, recreational and social activities.

Membership of the trust is on an annual basis with renewals due each year at the annual meeting. New membership is subject to availability of places after the end of May each year.

Membership numbers are governed by the size of the hall and fire/health and safety issues. The club has been in its home, The Phoenix Hall, since 2002

Among the activities currently enjoyed by BTAT members are indoor groups (played at The Phoenix Hall) which include card and board games such as bridge, cribbage, Rummikub, Scrabble and whist. There are also discussion and book groups, music groups, table tennis, carpet bowls and keep fit classes.



Activities away from the club premises include pitch and putt, pétanque, activity lunches and walking groups.

Members may bring guests to many of the activities in order to give them the opportunity to experience the ethos of the trust and assess whether they would like to become members and participate fully in BTAT activities.

Non members are invited to attend on a Thursdays between 9.30am and 11.30am for a coffee morning (cost £1) where they can meet with a small group of the members and find out about the trust and the activities that are run. They can then decide if it is the type of organisation for them and about the procedure for joining.

Details can be obtained by emailing admin@btat.orangehome.co.uk

PICTURED LAST YEAR: Above, BTAT members enjoying an evening of pantomime fun, and left, having a flutter at a race night evening.



81 Fore Street,
Bovey Tracey
Devon, TQ13 9AB

A caring alternative to residential care

Services include

Personal Care - Assistance with bathing
Meal and food preparation - Shopping - General Domestic

Phone: **01626 830343** or **07901 602541**

info@angelhomecare.co.uk

Registered with the Care Quality Commission



19th Century Coaching House Ideally Located on the Edge of Dartmoor

Conveniently situated just minutes from the A38 and within
easy reach of golfing facilities at STOVER and Dartmoor

- 8 En-suite Bedrooms • An Extensive Menu at Lunchtimes and Evenings
- Real Ales and Continental Lagers
- Fully Air Conditioned Function and Conference Facilities

Station Road, Dolphin Square, Bovey Tracey, Devon TQ13 9AL

Telephone: 01626 832413

web: dolphinbovey.net email: dolphinbovey@aol.com

Fully Licensed Hotel • Large Car Park

BOVEY TRACEY Carnival



BEFORE anything else, a massive THANK YOU to all the residents, businesses, community groups, and Bovey Tracey Council for supporting us. We had one of our best years in 2014.

At our annual meeting in November, we were able to give donations to the Dartmoor Vale Rotary, Bovey Tracey Activities Trust, Firefighters Benevolent Fund and the D&C Police Widow & Orphans fund.

This year, we have a special event returning to our streets. The annual cycle race will be back and taking place on Thursday, July 23, with times to be confirmed.

Our 2015 calendar kicks off on Saturday, July 25, with Picnic in the Park & Duck Race in Mill Marsh Park from 5.30pm-11pm.

On Sunday, July 26, we are enjoying the day in Mill Marsh Park at our Sunday Funday & Dog Show from 12.30pm where there will be live music, kid's activities, stalls, car boot sale and more.

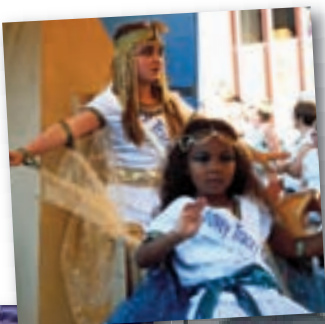
The rest of the week's events are as normal starting with Carnival Bingo at the town hall on Monday, July 27, 7pm start.

Tuesday, July 28, is Quiz Night



at The Dolphin Hotel starting at 7.30pm.

Wednesday, July 29, we have Sports Night at the Recreation ground by the Swimming Pool starting at 6.30pm.



Thursday, July 30, is Skittles Night at the Football Club starting at 7.30pm.

Friday, July 31, is the Interpub Challenge starting at 7pm at The Football Club.

Saturday, August 1, is Procession Day starting at 6pm from the town hall and proceeding on its usual route which will finish at Pottery Road/Thorns Cross. A map of the procession route can be found at www.facebook.com/boveytraceycarnival

We are also delighted to have the fireworks display in Mill Marsh Park at 10pm kindly organised by Funlands Funfair and The Jolly Roger.

To keep an eye on all our events you can keep up to date by joining us at www.facebook.com/boveytraceycarnival or follow us on twitter @boveycarnival.

And if you want to get involved in the carnival contact Hayley Smith by emailing mrs.hayley.smith@hotmail.co.uk or ring 07878434282.

Alternatively, come to one of our meetings in The Bell Inn on the third Monday of every month.





Tracey House Retirement Home

*A family run home offering quality of life and
comfort to elderly people*

Haytor Road
Bovey Tracey TQ13
9LE
T 01626 833281

www.traceyhouse.co.uk



Bovey Tracey

Golf Course & Driving Range

Bovey Tracey • Newton Abbot • Devon

Wray Valley Café
OPEN TO EVERYONE
Now serving Sunday
roasts 12-2pm

9 Hole Golf Course – PAR 34
Floodlit Driving Range
Pitch & Putt

Open Daily from 8.30am.



Lessons available
with resident
P.G.A. Professional

Located on the A382

NEAR BOVEY TRACEY, DEVON TQ13 9NG

Tel: 01626 836464

www.boveytraceygolfclub.co.uk

The Bovey Tracey Players



THE Bovey Tracey Players are a thriving drama group of around 50 members. They aim to produce three shows a year.

As an active drama group they require a range of skills and interests as well as directing, acting and singing. These include set building; make-up, costume, lighting and sound as well as front of house duties. Musicians are always welcome.

A wide variety of full length and one act plays have been produced over the years and these have included comedy, farce and drama and on occasions, the premiere of new writings by members.

A pantomime is produced every other year alternating with a nativity play in the local parish church.



Both types of production have proved popular with local audiences.

The Players have also performed street theatre, cabarets and a large number of members were also involved in a very successful '1950s Radio Show' presented in celebration of the Queen's Diamond Jubilee.

The Players also enjoy a variety of social events which helps to raise funds for their nominated charity each year.

For more details and up to date information on what is happening with the group, visit the Players' website at www.boveytraceyplayers.org or contact the chairman, David Cartwright, on 01626 835250.



The Kitchen and Bathroom Warehouse

Hand Crafted Locally, just for you



Wignall's Ltd
1 NAM House, Bradley Lane,
Newton Abbot, TQ12 1JP
01626-354194 – www.wignalls.co.uk

WIGNALL'S

Bovey Tracey Youth Café

BOVEY Tracey Youth Café provides a free drop in facility where young people aged ten-18 can relax in a safe and caring setting, and become involved in a range of activities and buy hot food and snacks.

WE offer a range of indoor activities including music, arts and crafts, games, pool and air hockey table, laptops, Wii, Xbox and PS3.

WE provide opportunities for volunteer work at the Youth Café for older teenagers to increase their confidence, achieve a sense of responsibility and promote themselves as positive role models.

WE raise drugs and alcohol awareness, working with our local drugs and alcohol agencies.

WE facilitate referrals and signpost young people to information i.e. smoking, sexual health, healthy eating and alcohol.

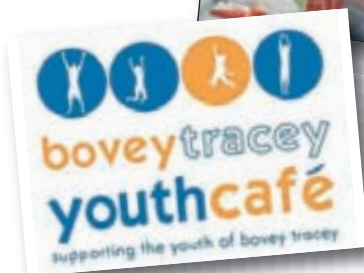


For further details please call
Maz Johnson on 01626 832361



WE offer support and help on employment and training through our partnership with Careers South West.

WE are involved in local community events such as The Contemporary Craft Festival and also hold a number of fundraising events to help raise vital funds for the café.



Supported by Bovey Tracey Town Council, The Contemporary Craft Festival, PPT Church, Devon Safer Communities Trust, Awards for All Lottery Fund, local businesses and members of the local community

Providing legal services to individuals and businesses in Bovey Tracey

Our team of specialist lawyers offer a wide range of services for businesses and individuals. We aim to provide our clients with a cost effective service tailored to their specific requirements.

Bovey Tracey
01626 833263

lawyer@wbw.co.uk
www.wbw.co.uk



The Dolly Tub Launderette

71 Fore Street,
Bovey Tracey,
TQ13 9AB
Tel: 01626 833675 /
01626 834184

Open 7 days a week: 8am–10pm

Service washes: Mon, Tues, Thurs, Fri
9am–12.30pm

Duvets, Blankets, Sports Kits, Ironing,
OAP Collections, Business Contracts,
Holiday Lets



Simply Flowers

59 Fore Street, Bovey Tracey

Special flowers for all occasions

LOCAL DELIVERY AVAILABLE

CALL US ON 01626 833373
www.simplyflowersdevon.com

Cannon Autobodies

ACCIDENT & BODY REPAIR
SPECIALISTS

Martin & Lisa Hill

TEL. 01626 832204
cannonautos@btconnect.com

Pottery Road, Bovey Tracey
Devon TQ13 9DS

R ANDREWS & SON

INDUSTRIAL • COMMERCIAL • DOMESTIC
PLUMBING & HEATING ENGINEERS

PLUMBING & HEATING SPECIALISTS

Gas Safe registered for
LPG/Natural Gas Work
Domestic, Catering,
Commercial & Industrial

Approved installers for
Vailant Boilers

We also carry out servicing and
repairs on all makes including oil

24 hour Emergency Service
Mistakes are costly – our advice is free

Call Trevor Andrews on
01626 832576
or
07721 437638

Email:
trevor@andrews9328.fsnet.co.uk

Web page:
www.randrewsandson.co.uk



Bovey Tracey Athletic Football Club

ALTHOUGH football has been played in Bovey since the late 1890s, the present club was formed around 1950 by the merger of Bovey Town and Bovey St Johns who played at the Recreation Ground. This merger was much the work of Frank French, who was at the time the local policeman.

The earliest documented game was on November 11, 1899, when Bovey entertained Torquay United for a friendly in what was Torquay's first season. Bovey went on to win the match 2-1 with a controversial penalty, the last kick of the game at the end of 20 minutes injury time.

On March, 31, 1961, in front of 3,000 spectators Bovey won the local Herald Cup 3-1 with goals from Slocombe, Hydon and Fone. Bovey have also appeared in this final, on four other occasions in 1931/32 (Bovey St Johns), 1938/39 (Bovey Town), 1993/94 and 2003/04 all ending in defeat.

In 1979, the football club made their biggest purchase to date with the purchase of land at Mill Marsh Park (the current ground), however, part of this land was sold under a compulsory purchase order in 1984 to assist in the construction of the 'Bovey Bypass'.

The 2008/09 season once again saw the club achieve new heights, with the use of new facilities here at the renamed Western Counties Roofing Ground. The East Division title was lost on the final day of the season but promotion to the Premier Division as runners up was achieved. The club was also beaten finalists in the Devon Premier Cup Final.

During the seasons of between 2009 and 2012, the club saw a succession of managers as Bovey Tracey retained their Premier Division status each season. With Football Foundation assisted grant funding, floodlights and covered



seating and standing areas have been added, making watching a great experience for the townsfolk, also a well-equipped kitchen offering supporters a wide range of hot and cold food and drinks.

The club's substantial youth system runs teams from under 8s to under 16s and will be creating an Under 18s team in the 2015-16 season, thereby filling the final gap in our club's player development structure.

Bovey Tracey continues to be the envy of many bigger clubs in the region, producing a large number of very talented youngsters. Recently, Cliff Walters (pictured above) went on to captain the Devon Under 18s side, and Liam Head has represented his country at International level, playing in both the home internationals, as well as the U17s European Championships.

There will be further ground and facility improvements over the next few years, starting with the provision of a new purpose-built pitch, to accommodate the under 9s and 10s, at the Western Counties Ground. This work is due to start in May 2015, and is due to be completed in time for the start of next season.

A club spokesman said: 'It is our aim to focus on our best assets, which in our opinion, are the local kids. We therefore strive to continuously improve our facilities and coaching staff, thus allowing us to focus on what's important, rather than tying ourselves down with huge player budgets that can, and does, damage football in general.'

Our club house is located on the Rec (next door to the swimming pool), and new members or visitors are always welcome.

Bovey Tracey AFC, is a local club, supporting local kids and adults alike. Please feel free to come along to a match.... you may just like it!

Bovey Tracey Pétanque Club

BOVEY Tracey Pétanque club play on their Piste at BT AFC Ground in St Johns Lane, Bovey Tracey, every Sunday afternoon from 2pm through until 4pm or 5pm (from the end of March until end of October) depending on the weather.

This is a friendly afternoon where the emphasis is on social activity of fun. The club also hosts games twice a month for Bovey Tracey Activities Trust on a Thursday.

2014 was another excellent year for the club having won the South Devon Twinning Pétanque League Shield for the 13th consecutive year. During the year the club also won four out of eight individual trophies in the South Devon Twinning Pétanque League.

The concept:

The sport is played with metal balls and a jack and can be played by teams of three players (triples), two players (doubles) or a straight head-to-head between two single players.

The object of each end is to get more of your boules closer to the jack than your opponent (each one that is closer scores one point) and the team/player to reach the score being played for first wins the game. The game is suitable for anyone aged from eight years and upwards.

Some of the members also play in a more serious but still very friendly competition in the League games. The club is open to any one who would like to try their hand at this very easy game played in a friendly competitive manner.

Anyone interested in trying the sport is welcome to come along on a Sunday afternoon and try it out, no equipment is required. Contact the treasurer, Mike Watson, on 01626 832888 or email mgtwatson@aol.com for further details.



Pictured above, team captain Mike Browne is pictured receiving the South Devon Twinning Pétanque League Shield from league president Mrs Ware-Owen at the presentation dinner.



Right: members during a league game at Bovey's Piste.

Bovey Tracey Lawn Tennis Club

BOVEY Tracey Lawn Tennis Club will offer you the opportunity to enjoy the many pleasures of playing tennis.

Come and join us – we are always happy to include new members.

We embrace all levels of ability, from starting small children off with a racquet and ball under the guiding eye of our LTA accredited coach Ryan Bougourd, to social mornings of good quality tennis during the week.

For the player who is a little reluctant to renew a previously held enthusiasm there is a 'Back To Tennis' evening on Tuesdays, run by Ryan, to revise and rekindle those skills. Once

re-established, players are encouraged to join in club nights on Mondays and Thursdays.

If really keen, players can join in the ladies', men's, and mixed teams that play in the Exeter and South Hams Leagues.

During the year we run friendly mixed tournaments and internal competitions, usually combined with a social get-together.

Do come and join us for casual tennis, competitions or coaching from our excellent coach.

Contact the club coach, Ryan Bougourd, on 07814 395564 or Rachelle Dobson on 01626 836626, www.boveytraceyltc.com.



Bovey Tracey Bowling Club

BOVEY TRACEY Bowling Club is situated in the Recreation Ground adjoining the cricket and tennis clubs. Vehicular access is from Newton Road, Bovey Tracey, TQ13 9PF. There is ample parking available.

This is a well-established club which celebrated its centenary in 2011. Originally connected with the cricket club, it became independent in 1980 with its own clubhouse which was replaced in 2008.

Constant upgrading of the green and its surrounds is always carried out.

Playing membership is just over 60 which is a comfortable number for the size of the green.

There is a busy fixture list for 2015 with both

men's and ladies' leagues, friendly matches, a weekly club evening, club tournaments and competitions. Also, in the winter, there are opportunities for indoor bowling, both matches and roll-ups, against local indoor clubs.

Off the green, there are a number of 'out of season' social activities, including weekly art and bridge groups.

The club would welcome enquiries from anyone interested in joining – both experienced or new bowlers.



Contact club secretary Sue Martin on 01626 830647.

Email: peteandsuemartin@yahoo.co.uk.

Bovey Tracey Cricket Club



LEFT: Run!
action from
Bovey Tracey
Cricket Club's
ground.

BOVEY Tracey Cricket Club is the Premier Cricket Club in the area.

Currently, we have four senior teams who play on Saturdays. All four Saturday XIs play in their respective leagues in the

Devon Cricket League. Our 3rd & 4th XIs play their home matches nearby Buckfastleigh Cricket Club. We also have Sunday friendly fixtures as well as a Ladies' section.

Additionally, we have a thriving junior section with more than 100 junior members registered. The club has fixtures on most days throughout the summer, with midweek matches and Colts matches.

On occasions the ground is used by the County Club to host some of their matches at all age levels.

This season we are hosting a two-day match for the Devon Lions who play host to Somerset 2nd XI. The match is May on Monday 4 and Tuesday 5. Starts 11am on both days.

Other representative matches are also staged on the ground.

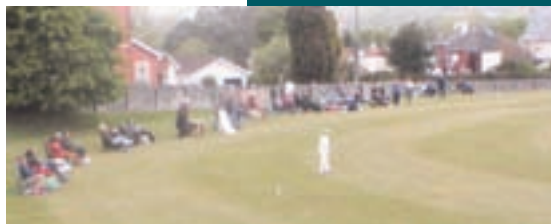
On match days, teas and refreshments are available from the pavilion.

We welcome anyone to the club. Why not pop along and see what we have to offer.



Chairman
Nigel Mountford
97 Pennsylvania Road
Exeter
EX4 6DW
Tel: 01392 434185
Mob: 07879 835761

Youth Manager:
Mark Taylor
Mob: 07854 426029



Website: boveytraceycc.co.uk



THE OLD COTTAGE TEA SHOP

- Coffees • Teas
- Light Lunches

Monday, to Saturday 10am-2pm

Bovey Tracey - Tel: (01626) 833430



Branches at Bovey Tracey, Chudleigh & Kingsteignton

Tel: 01626 833303

www.kingsteigntonvetgroup.co.uk

Email: reception@kvg.uk.com

COMMITTED TO YOU AND YOUR PETS

The Shop that's **BIGGER** than it looks

ARNOLDS

The Ironmongery
and Hardware Store

11 TOWN HALL PLACE, BOVEY TRACEY

Tel: (01626) 832359

Calor Gas and camping gas stockists

Luxury Organic Products

Evening Appointments

UV Tanning Cubicle

Reflexology

Nutritional Advice

Hypnotherapy

**01626
836892**

72 FORE STREET • BOVEY TRACEY • TQ13 9AE

KEUNE

timothy john
HAIR • HEALTH • WELL-BEING

BOVEY TRACEY'S PRODUCE MARKET 2015

Fresh Lamb,
Beef and Pork

Free Range
Chicken and
Eggs

Deli Fish

Bread,
Croissants and
Cakes

Cheeses
Preserves and
Honey

Plants
Fairtrade Stall



FORNIGHTLY SATURDAYS 8.30am to 1.00pm

"Take a step closer to a better way of life!"

Market Manager: Marion Carpenter 01626 834109

mooreland taxis
your local service

Friendly Caring Helpful Drivers
Four and Six seater vehicles.

Any distance • Baby Seats on request
Clean well behaved pets • Dartmoor Tours by the hour
Courier service available • Luggage forwarding
Any journey any time, by prior booking please

Call Sally on 01626 835 095

sally@getuthere.net

www.getuthere.net

**Specialist
Legal
Services**

Nash & Co
Solicitors
www.nash.co.uk

For Wills, Trusts
and Probate Service

Contact Bridget Holness
Consultant Solicitor
on 01626 830264 (Bovey Tracey office)

Nash & Co Solicitors LLP
Head Office:
Beaumont House, Beaumont Park,
Plymouth, Devon PL4 9BD
t: 01752 664444



**DARTMOOR
GARAGES LTD**

**Celebrating more than 37 years
as a family business
Servicing all your vehicle needs**

Assuring you that we will be continuing to look
after you throughout 2015 and beyond

**STATION ROAD, BOVEY TRACEY
01626 832432**

Bovey Tracey Primary School

Building every child's future

IT'S been another busy and exciting year at Bovey Tracey Primary School. We strive every day to provide the very best environment in which children can learn, develop and thrive. Whatever a child's abilities, and wherever their interests and enthusiasm lie, we help each and every one of them achieve their very best.

Bovey Tracey is a community which lives and learns together, and we're proud to be part of it. Of course the very highest standards of achievement are at the heart of our work, but we also want every child to become fulfilled, content and an integral part of the world around them. As a small yet solid and supportive community right on the edge of Dartmoor, we live and learn together.

We offer a diverse and challenging curriculum with high quality teaching, backed by energetic and focused classroom support. Learning may sometimes be hard, but we do our very best to make sure it is always fun. We take care to nurture those who may be falling behind and also spur on others who are ready to stretch themselves further.

Alongside stimulating and enjoyable lessons each day, we look to offer a host of different challenges and experiences which create the richness of school life.

For the last two years, for example, we have celebrated the Tour of Britain cycle race by assembling a 30ft collage on the school field, catching the race helicopter's eye and gaining us national TV coverage. We marked the centenary of the first world war by visiting Bovington Tank Museum, Dorset, and by staging our very own play – *Homefires* – in tribute to the town's fallen all those years ago.

We've celebrated diverse cultural festivals, taken a strong stand against bullying and actively supported a number of local charities, such as the Dartmoor Pony Heritage Trust.

Our older children again enjoyed a wonderful weekend away on the north Devon coast at Skern Lodge, while younger ones built fires, toasted marshmallows and pond-dipped at Heatree Activity Centre on Dartmoor.

Another annual staple we were happy to offer



was the students' co-project with Dartmoor-based Med Theatre to write, produce and perform their very own film – this year a haunting mystery called *No Access*.

● Pictured is the Tour of Britain cycling collage (below), the excited cast and supporters of *Homefires* (top) and preparations for filming during Med Theatre's visit last summer (above).



Tel: 01626 833257

Email: admin@bovey-tracey-primary.devon.sch.uk

Web: www.bovey-tracey-primary.devon.sch.uk



The Bovey Weavers

1 Station Road - Bovey Tracey

Tweeds-Throws-Scarves-Knitwear

Ladies Shirts-Sheepskins

And much more

See our looms working

Tel: 01626 833424

info@boveyweavers.co.uk

New Image

Razor Cutting

Perms:

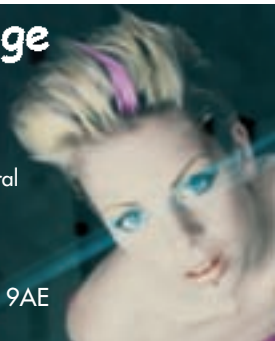
Conventional and Spiral

Foils and Flashes

58 Fore Street

Bovey Tracey TQ13 9AE

01626 832319



J.P. Sibley & Son

Town Hall Garage

• BOVEY TRACEY •

01626 832424

**Offer Personally Selected Vehicles:
Fully serviced and guaranteed**

- Servicing ● MoT
 - Repairs ● Diagnostics
- FREE COLLECTION**

**GOOD CONDITION VOLVOS
DESPERATELY WANTED**

**Also at
Chudleigh Motors
• PARADE, CHUDLEIGH •
01626 853157**

THE COPPER KETTLE



**LICENSED RESTAURANT
BED & BREAKFAST**

from £32.50 pppn (3 nights or more)

**OPEN FOR
Breakfasts,
Morning Coffee,
Lunches,
Snacks**

**and Cream Teas
Closed Mondays and Tuesdays**

**STATION ROAD, BOVEY TRACEY
01626 832243**



Mill House, Station Road, Bovey Tracey, TQ13 9AL.

Tel: 01626 833023

Bovey Tracey - Consulting Hours

Mon-Thurs: 9:00-10:30am, 2:00-3:00pm & 4:30-6:00pm

Fri: 9:00-10:30am & 4:30-6:00pm

Sat: 9:30-11:00am



ALSO AT Moretonhampstead & Christow

Farm & Companion Animals

24 Hour Emergency Service

on 01647 440441



Dartmoor Pony Heritage Trust

Celebrating ten years

MOORLAND ponies are an integral part of the Dartmoor landscape. In addition to drawing in visitors, they play a vital role in grazing the moor and maintaining its character. But in recent years, their numbers have been in decline.

The Dartmoor Pony Heritage Trust (registered charity no. 109196) was established in 2005 in response to widespread concern about the viability and long-term survival of the traditional Dartmoor pony.

We are based in Bovey Tracey where we operate a purpose-built, all-weather visitor and education centre at the Parke Estate on the Haytor Road. This year the DPHT is celebrating its tenth anniversary.

'Ponies Inspiring People':

Opening Minds and Healing Hearts

During the past six years, DPHT has built a strong reputation for its courses for young people with challenging behaviour and/or disabilities, working with Dartmoor ponies.



Our aim is to create opportunities for young people to meet their full potential and to provide them with a set of social and emotional skills that will allow them to participate more effectively in everyday life and potentially, move into long-term employment.

How You Can Help

We offer a broad range of opportunities for volunteers of all ages, with or without pony skills, but all are rewarding and fun!

We need help with organising and resourcing public access days, as well as our many other activities, which include pony care, field maintenance, school visits, development courses for young people and training conservation grazing managers.

We run a regular practical conservation programme from September to March on our moorland site at Bellever and FREE Guided Walks all year. We are always keen to meet new people who can enhance our team. A range of skills is more important than knowledge of the Dartmoor pony as training is provided.



For more information, please see website
<http://www.dpht.co.uk/> or call 01626 833234

Bovey Tracey Accommodation

ACCOMMODATION

HOTELS

The Cromwell Arms	.01626 833473
The Dolphin	.01626 832413
The Edgemoor	.01626 832466
The Rock Inn, Haytor	.01364 661305
Ilington Country House Hotel	.01364 661452

BED AND BREAKFAST

The Copper Kettle	.01626 832243
Yarrow Lodge	.01626 836589
Courtenay House	.01626 835363
The Yellow House	.01626 835843
Clarendon	.01626 830355
Holwell Bungalow	.01647 221357

Shaptor Studio	.01626 833130
Moordown Garden House	.01626 833275
Hyner Farm – Christow	.01647 252923

SELF CATERING

Wooder Manor – Widecombe	.01364 621391
Twelve Oaks	.01626 352769
East Dunley Cottages	.01626 832878
Stickwick Manor & Cottages	.01626 833266

CAMPING AND CARAVANNING SITES

Lemonford Park	.01626 821242
Five Wyches	.01626 832310
Twelve Oaks	.01626 352769

LOCAL CONTACT NUMBERS

Bovey Tracey Town Council	.01626 834217
Bovey Tracey Information Centre	.01626 832047
Bovey Tracey Primary School	.01626 833257
St Catherine's Primary School – Heathfield	.01626 832665
Doctors Surgery	.01626 832666
Dentist	.01626 833999
	and .01626 834241
Chemist	.01626 832275
Hospital	.01626 832279

POST OFFICES:

Bovey Tracey	.01626 833201
Brimley	.01626 833215
Heathfield	.01626 835947
Heathfield Community Centre	.01626 834420
Library	.01626 832026

CHURCHES:

St Peter, St Paul & St Thomas of Canterbury	.01626 833813
The Church of the Holy Spirit (RC)	.01626 833432
St John's, Bovey Tracey with Heathfield (CE)	.01626 833451
Bovey Tracey Methodist Church	.01626 366744
Bovey Tracey Baptist Church	.01626 834755
Devon County Council	.01392 382000
Teignbridge District Council	.01626 361101
Dartmoor National Park Authority	.01626 832093

Guide 2015 and organisations

CONTACT DETAILS OF LOCAL CLUBS AND ORGANISATIONS

Activities Trust (Jenny Reeves)	01626 833988
Army Cadets (Lt G Wilding MBE)	01626 834531
Bovey Tracey Society of Artists (Helen Griffiths)	01626 833555
Bible Club for Children (Mary Manley)	01626 832281
Bovey Tracey Bowling Club (Mrs Sue Martin)	01626 830647
Bovey Tracey Boys Brigade (Gill Hardy)	01626 833343
Bovey Tracey Community Care (Ros Pugsley)	07794 599206
Bovey Tracey Cricket Club (Chrissie McNeill)	07943 156600
Bovey Tracey Athletic Football Club (Mark Studdy)	07814 703097
Bovey Tracey Guides, Brownies & Rainbows (Erica Martin)	01626 889099
Bovey Tracey Heritage Trust (Margaret Wright)	01626 834331
Bovey Tracey Horticultural Society (Jill Hosford)	01626 832966
Bovey Tracey Hospital League of Friends (Avril Kerswell)	01626 832923
Bovey Tracey Petanque Club (Shirley Watson)	01626 832888
Bovey Tracey Scouts, Cubs & Beavers (Ken Daniels)	01626 832042
Bovey Tracey Swimming Pool (Martin Brealey)	01626 832821
Swimming Pool – Direct line	01626 832828
Bovey Tracey Tennis Club (Melanie Kempson)	01626 833939
Bridge Club (Hilary North)	01626 832345
Busy Bees Pre-School (Mrs J Miller)	01626 832411
Carnival Committee (Hayley Smith)	07878 434282
CLIC (W Walling)	01626 834126
Computer Self-Help Group (Ted Ridgewell)	01626 830605
Devon Guild of Craftsmen (The Director)	01626 832223
Natural England – Yarnor Wood (Albert Knott)	01626 832330
Friends of Rowcroft Hospice (John Pike)	01647 221222
Heathfield Community Centre	01626 834420
Home Farm Trust (Hazel White)	01626 833332
Ladies Luncheon Club (Pattie Jewett)	01626 832553
National Trust – Parke (Catherine Parsons)	01626 834750
New Century Singers (Wyn Turner)	01626 835025
Over 60s Club (Helen Cowell)	01626 832291
Probus Club (Trevor Jones)	01626 835014
Rambling – Bovey Walkers (Derek Sheppard-Vine)	01626 836735
Riverside Befrienders (The Riverside Surgery)	01626 832666
Rotary Club of Chudleigh & Bovey Tracey (Marion Thomas)	01626 852670
Scottish Country Dancers (Paul Cross)	01626 854399
Tea Dance (Beryl & John)	01626 830495
The Bovey Tracey Players (David Cartwright)	01626 835250
Women's Institute: Bovey Tracey & District (Linda Griesell)	01626 833348
Parke (Angela Liddiard)	01626 830634
Brimley (Sheelagh Wavish)	01626 836616
Youth Café, Bovey Tracey (John Midgley)	01626 832751
(Jeremy Butcher)	01626 832361

New homes in Bovey



Show
home
opening
**summer
2015!**

With a superb mix of 2, 3, 4 and 5 bedroom homes, this stunning new development on the outskirts of Bovey offers a choice of homes for everyone...



**...and what some
builders call extras,
we call standard!**

Each Bovis Home comes with a wide range of features at no extra cost - saving you thousands of pounds!

Contact us on **0845 370 4908** for more information

www.bovishomes.co.uk

Photographs show a typical Bovis Homes interiors.
Please ask sales advisor for details.

Selling in association with
complete
NEW HOMES

**BOVIS
HOMES**